



PLC-08 – FLAT TOP BARGE

GENERAL

TYPE OF BARGE	Barge
HULL NUMBER	699
BUILT BY	Verolme Scheepswerf Heusden
DESIGN & MODIFIED	Projects Link Contacting Co LLC
YEAR OF BUILT	1964
OWNER	Projects Link Contacting Co LLC

PRINCIPAL DIMENSIONS

LENGTH OVERALL	35.00 Mts.
BREADTH MOULDED	11.50 Mts.
DEPTH MOULDED	2.25 Mts.

REGISTRATION

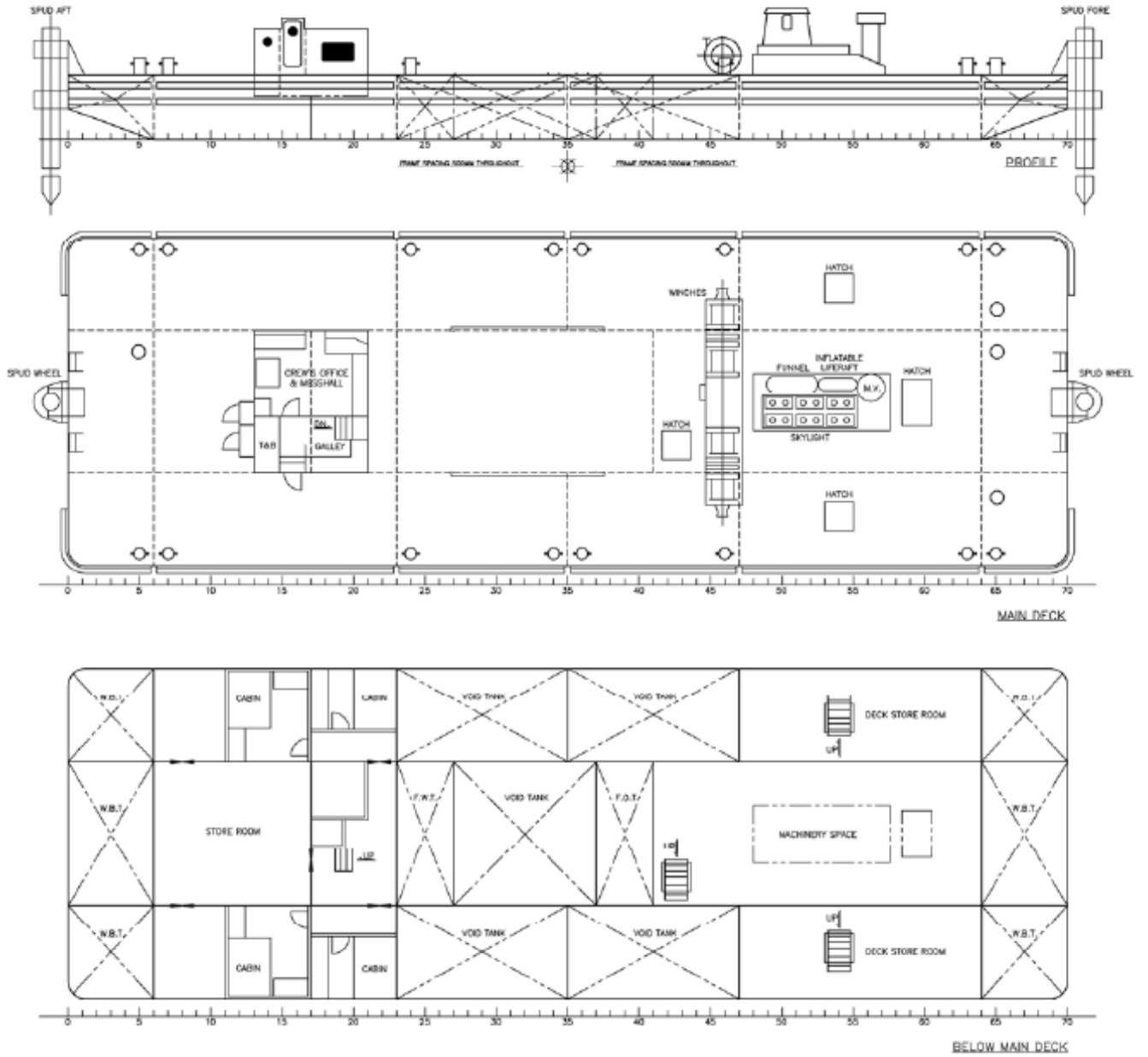
OFFICIAL NUMBER	0007887
FLAG NAME	United Arab Emirates
PORT OF REGISTRY	Dubai
CLASSIFICATION	RINA

TONNAGE & CAPACITIES

GRT	242 Tons.
NRT	72 Tons.

DECK EQUIPMENTS

GENERATOR SET	30 KVA Perkins Generator 250 KVA Perkins Generator
WINCHES	4 Nos Hydraulically operated winches
ANCHORS	4 Nos Stockless Anchors 2.0 Tons (HYD-HHP)
NAVIGATION LIGHTS	3 Nos Navigation lights with frame & 1 Nos Diamond shape
POWER PACK	Diesel driven 250 KVA power pack
SPUD	2 Nos external spud housing & 2 Nos Spuds operated with Hydraulic winch , 18 Mts ,Dia 26",Thickness 30mm
FAIR LEADS	2Nos roller fairlead



PLC-08 - FLAT TOP BARGE

PLC

PLC MARINE TRANSPORT LLC

Post Box No. 212019, United Arab Emirates.

Phone: +971 4 399 9932.
Fax: +971 4 399 9181.

Web: www.plc-contracting.com