



## PLC01 - POSITION BARGE WITH FOUR POINT MOORING

### GENERAL

TYPE OF BARGE	Steel Flat Top Deck Barge
HULL NUMBER	EM2007-02
BUILT BY	Yizheng Xinyang Shipbuilding Co Ltd - China
DESIGN & MODIFIED	Projects Link Contacting Co LLC
YEAR OF BUILT	2007
OWNER	Projects Link Contacting Co LLC

### PRINCIPAL DIMENSIONS

LENGTH OVERALL	70.11 Mts.
BREADTH MOULDED	19.51 Mts.
DEPTH MOULDED	04.27 Mts.

### REGISTRATION

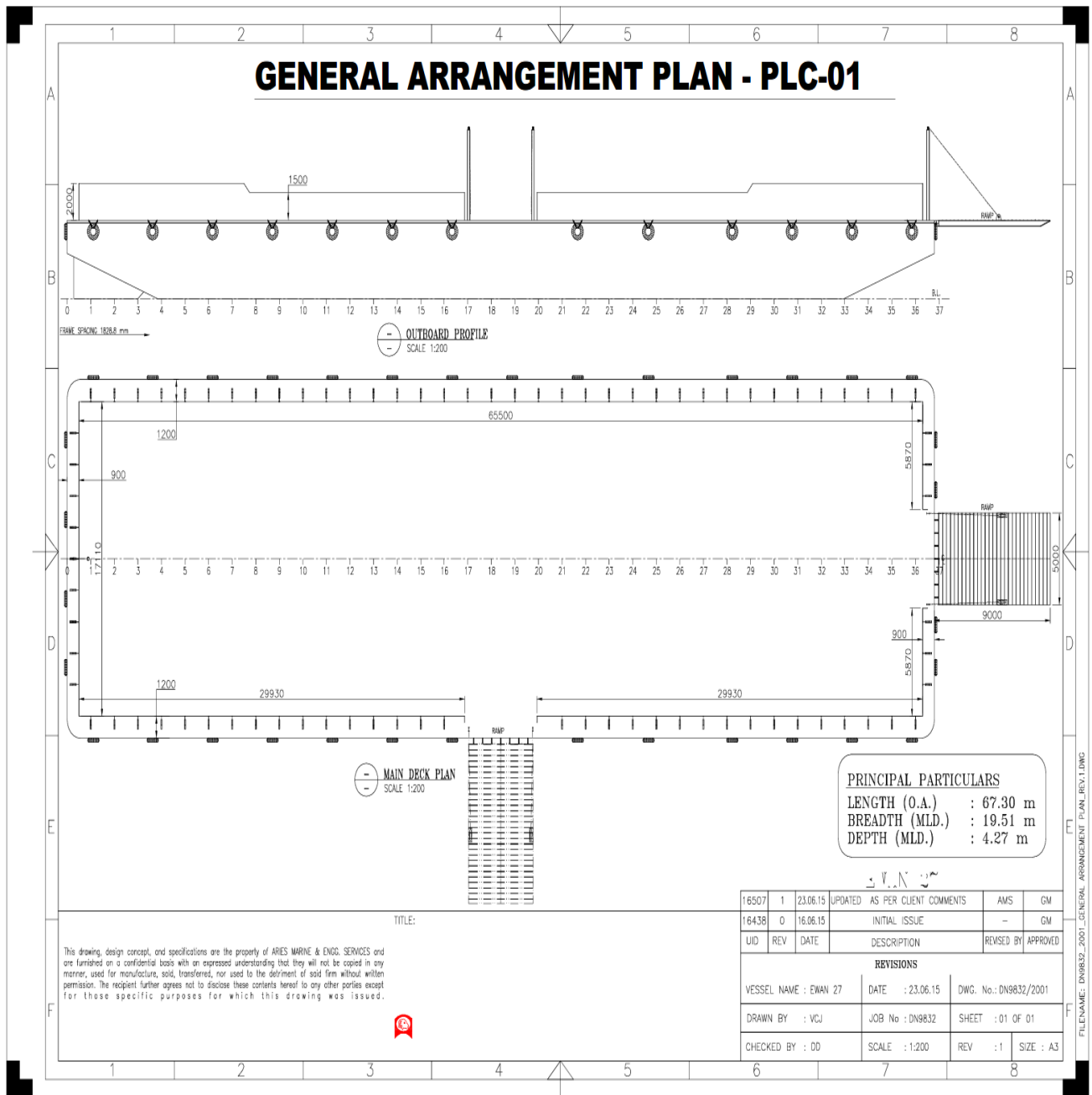
OFFICIAL NUMBER	007912
FLAG NAME	United Arab Emirates
PORT OF REGISTRY	Dubai
CLASSIFICATION	Bureau Veritas (BV)

### TONNAGE & CAPACITIES

GRT	1469 Tons.
NRT	440 Tons.
DECK THICKNESS	14 mm
DECK STRENGTH	10 Ton Per M <sup>2</sup>
DEAD WEIGHT	3,642 Tons Approx

### DECK EQUIPMENTS & ACCESSORIES

NAVIGATION LIGHTS	3 Nos Navigation lights with frame & 1 Nos Diamond shape
RAMP	1 Nos Steel fabricated ramp mounted on the barge with 8 nos pad eye in BOW & STBD, Ramp & Sanction can be movable to BOW or STBD. Size : 5.1Mts (Width) and 9Mts (Length) , Pad Eye dimension 52mm
FENDERING	Used tire fenders
TOWING BRACKETS	2 Nos smit brackets
FAIR LEADS	4 Nos Swivel head fairlead



# PLC01 - POSITION BARGE WITH FOUR POINT MOORING

**PLC**

PLC MARINE TRANSPORT LLC

Post Box No. 212019, United Arab Emirates.

Phone: +971 4 399 9932.  
Fax: +971 4 399 9181.

Web: [www.plc-contracting.com](http://www.plc-contracting.com)